



### Apartment Features\*

- Spacious 3 and 4 Bedroom Apartment Homes
- Full Size Washer & Dryer in each Home
- Fully Equipped Kitchens with Pantry
- Vaulted Ceiling in Living Room
- Ceiling Fans

All the elements of a great lifestyle at an affordable price. Here, you'll find a tradition of excellence in everything from our impeccable service to our quality construction. The Grove Subdivision features on-site management, a playground, and an on-site daycare facility.

Come visit The Grove today!

## The Grove Subdivision

### Community Amenities

- Covered Carport
- Outside Storage
- Spacious Lots with Front and Back Yards
- Playground
- Onsite Daycare Facility
- 24-Hour Emergency Maintenance
- Professional On-Site Leasing Office / Manager

12714 Shady Grove Loop  
Amite City, LA 70422

**(985) 748-7522**  
(985) 748-7597 Fax



[groveamite.com](http://groveamite.com)

\*Availability may be limited to select apartments only. Subject to change with out notice.



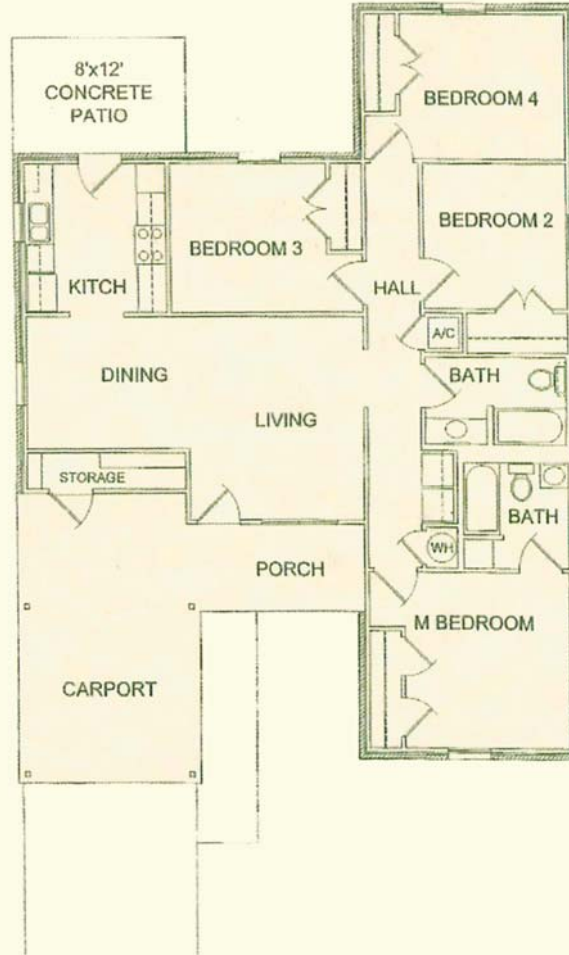
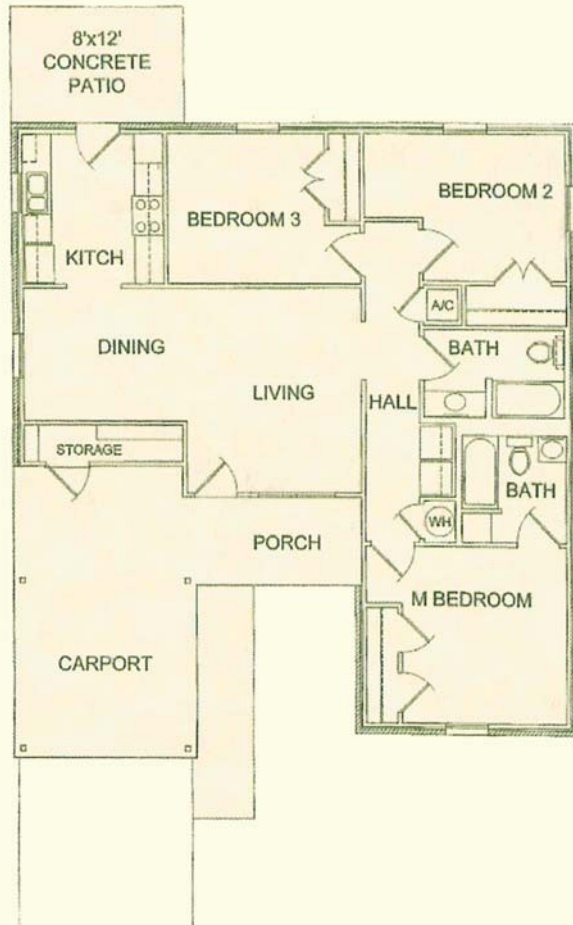
**(985) 748-7522**

**3 Bdrm / 2 Bath**  
**1,270 Sq. Ft.\***

Rent \_\_\_\_\_  
Deposit \_\_\_\_\_

**4 Bdrm / 2 Bath**  
**1,470 Sq. Ft.\***

Rent \_\_\_\_\_  
Deposit \_\_\_\_\_



## *The Grove Subdivision*

**The Grove Subdivision**, where southern charm and grace welcome you, and distinctive style surrounds you. Our spacious 3 and 4 bedroom homes reflect timeless elements of style and are designed with the comfort and convenience you desire.



\*Square footage is approximate Actual floorplans may vary

12714 Shady Grove Loop  
Amite City, LA 70422

**(985) 748-7522**  
(985) 748-7597 Fax

**groveamite.com**